

Solar Spectral Irradiance & Climate Modeling Workshop

9:00–9:15 AM	<i>Workshop Goals</i>	Peter Pilewskie, LASP
9:15–9:25 AM	<i>Welcome/SORCE Update</i>	Tom Woods, LASP
9:25–9:55 AM	<i>Overview of measured SORCE SSI and its variability</i>	Jerry Harder, LASP
9:55–10:25 AM	<i>Overview of models of SSI variability (time scales, users, applications)</i>	Judith Lean, NRL
10:25–10:45 AM	Break	
10:45–11:15 AM	<i>Paleoclimate applications</i>	Caspar Ammann, NCAR
11:15–12:00 N	<i>Discussion</i>	All
12:00–1:15 PM	Lunch	



Solar Spectral Irradiance & Climate Modeling Workshop

12:45–1:15 PM *Tour of LASP*

1:15–3:15 PM *Coupled climate/atmospheric models*

WACCM
HAMMONIA

Dan Marsh, NCAR
Hauke Schmidt, Max
Planck Institute;
Guy Brasseur, NCAR
Judith Lean, NRL

GISS

3:15–3:30 PM ***Break***

3:30–4:00 PM *Earth atmosphere radiative transfer* Jennifer Delamere, AER

4:00–4:15 PM *LASP Interactive Solar Irradiance
Datacenter (LISIRD)*

Marty Snow, LASP

4:15–5:00 PM *Discussion*

All

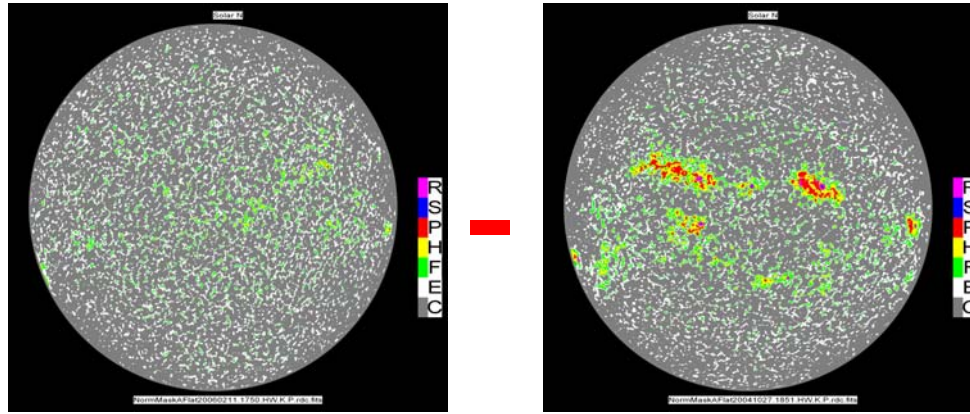


Workshop Goals

- Promote the use of SORCE SSI and its variability in a variety of applications: climate, chemistry, radiative transfer, ...
- Emphasis on full spectrum (not just wavelengths where greatest *relative* variability occurs)
- Emphasis on climate processes, mechanisms of climate response to SSI variability

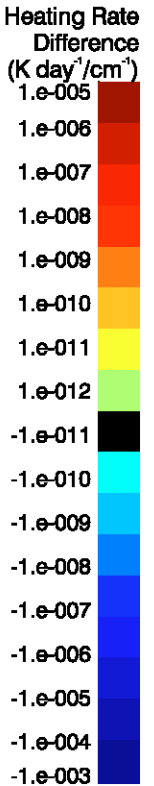
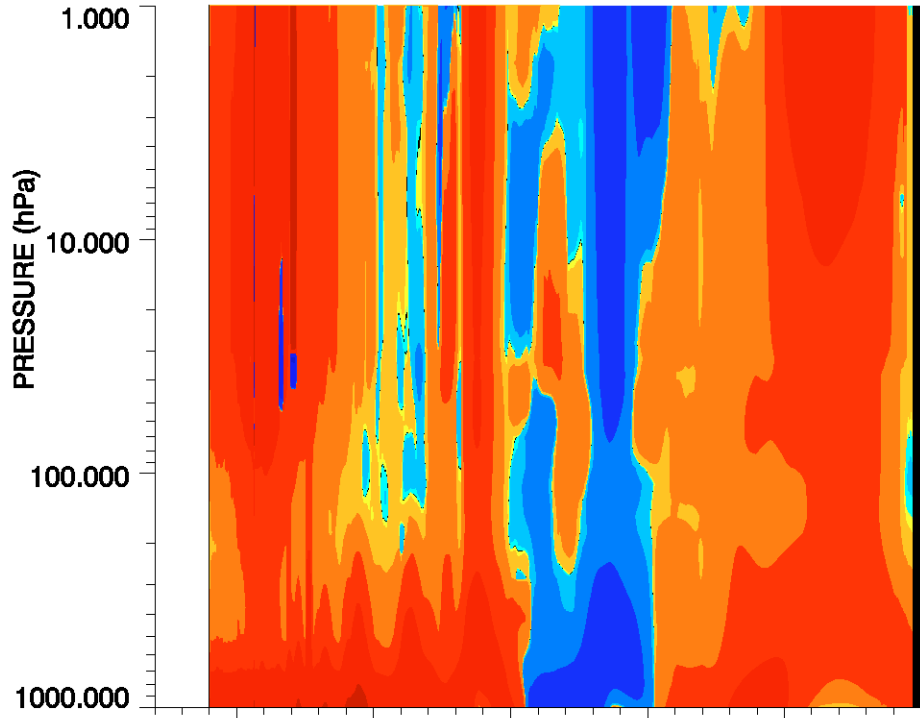
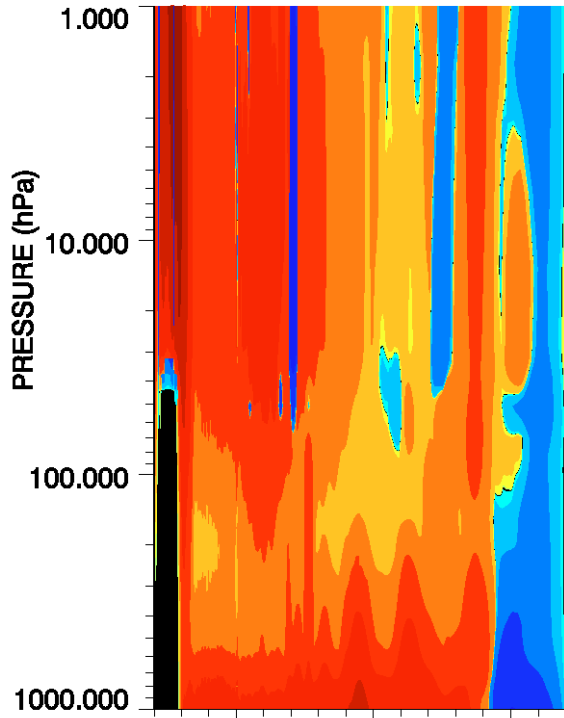
Solar Heating Rate Difference

11 Feb 2006 - 27 Oct 2004



SIM

SRPM



WAVELENGTH (um)

WAVELENGTH (um)

Solar Spectral Irradiance & Climate Modeling Workshop

Workshop Goals

- Promote the use of SORCE SSI and its variability in a variety of applications: climate, chemistry, radiative transfer, ...
- Emphasis on full spectrum (not just wavelengths where greatest *relative* variability occurs)
- Emphasis on climate processes, mechanisms of climate response to SSI variability
- Foster new interactions between modeling community and SORCE science team
- Ultimate goal is improved understanding of SSI-climate interactions



Solar Spectral Irradiance & Climate Modeling Workshop

Anticipated Workshop Outcomes

- Better understanding of what SORCE SSI data are available, format, cadence, sampling and spectral resolution, precision and accuracy
- Better understanding of current and future user community needs
- Publication (*EOS*, *Earth Observer*, ..., ?)

