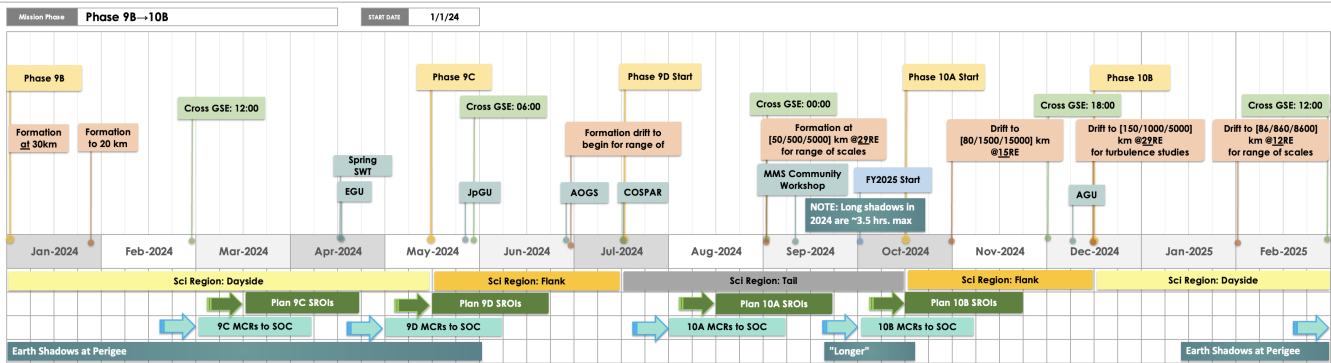


MMS Science Working Team Home

rcCon

MMS Mission Annual Timeline



MMS Workshops

MMS Workshops

10th MMS Community Workshop
University of California,
Los Angeles

Save the Dates:

Team Splinter Meetings,
September 16, 2024 (Monday)

Workshop dates: September 17-19,
2024 (Tuesday-Thursday)

MMS Science Telecons

Tuesdays, 10:00 am |
Central US Time | 1 hour

[Join the Meeting](#)

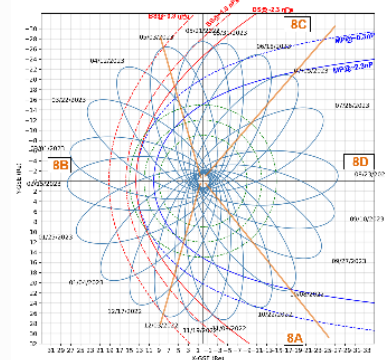
April 30, 2024

Break. Fifth Tuesday

Schedule

May-2024	Date	Team	Group	Lead
1 st Tuesday	5/7	5	IWF – Austria	Owen Robert S / Rumi Nakamura
2 nd Tuesday	5/14	6	SwRI - HPCA	Stephen Fuselier
3 rd Tuesday	5/21	7	UCLA - FIELDS	Hanyin g Wei / Chris Russell
4 th Tuesday	5/28	8	APL / Aerosp ace - EPD	Ian Cohen / Christine Gabrielse

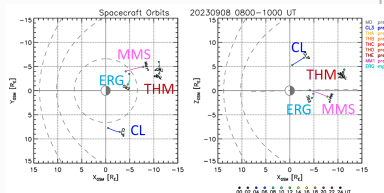
Orbits / Formations / SROIs - Year 8



[Find previous Years / Orbit Phases / SRO maps here](#)

Collaboration Opportunity

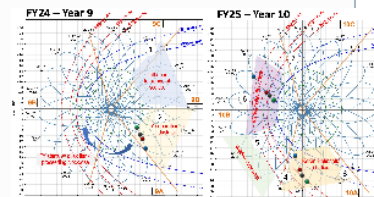
Phase 8D Multi-mission Conjunction Opportunity



>3 missions conjunctions with MMS, ARASE, THEMIS and/or Cluster, some with foot point in North-American sector

Presentation by Nakamura, Y. Miyoshi, N. Kitamura: MMS-ARASE Conjunction observations during Phase 8d.(9a) - [slides attached here.](#)

FY24-FY25 Formation Change



[Details submitted to the MOC /SOC](#)
[2023 Senior Review Proposal](#)



MMS CMAD

MMS Calibration and Measurement Algorithms Document (CMAD)

v2.0 Released 22 November 2022

includes and supersedes previous Instrument User Guides

[Appendix G - CMAD - MMS_SeniorReview2023_v22Nov2022.pdf](#)

Comments/Additions are always welcome. Send those to Ashley King (ashley.k.barrett@nasa.gov), who will forward them to the appropriate team for inclusion.



Special Issues

Physics of Plasmas "Plasma Physics from the Magnetospheric Multiscale Mission"

Closed for submissions, the Special Issue is available online [here](#). A limited number of hard copies will be printed and distributed. More details to come soon.

Guest Editors: [Julia E. Stawarz](#) (Imperial College London) and [Kevin Genestreti](#) (Southwest Research Institute)

Jun-2024	Date	Team	Group	Lead
1 st Tuesday	6/4	9	Rice	Pat Reiff
2 nd Tuesday	6/11	10	Dartmouth - TMDA	Yi-Hsin Liu /Richard Denton
3 rd Tuesday	6/18	11	UMD - TMDA	Jim Drake /Marc Swisdak
4 th Tuesday	6/25	12	GSFC - TMDA	Li-Jen Chen /David Sibeck

Jul-2024	Date	Team	Group	Lead
1 st Tuesday	7/2	13	U Colorado - FIELDS	Narges Ahmad /Bob Ergun
2 nd Tuesday	7/9	14	UC Berkeley	Tai Phan /Mitsuo Oka
3 rd Tuesday	7/16	15	JAXA ISAS/U Tokyo - Japan	Yoshifumi Saito /Naritoshi Kitamura /Hiroshi Hasegawa
4 th Tuesday	7/23	16	IRF - Sweden	Daniel Graham /Yuri Khotyaintsev
5 th Tuesday	7/30		Break	

Links to Other Meetings:

[2023 US-Japan Workshop on Magnetic Reconnection](#), from Jun. 26 to Jun. 29, 2023, at Daiwa Royal Hotel, Ise Shima, Japan

Links to Previous Meetings:

- [MMS Spring 2024 Science Working Team Meeting](#) (SwRI, TX)
- [MMS Fall 2023 SWT Meeting](#), The Hotel at The University of Maryland,
- 9th MMS Community Workshop, hosted by LASP, June 2023, <https://sites.google.com/view/9th-mms-community-workshop/>
- Geotail Symposium, <https://sprg.isas.jaxa.jp/Geotail30/>
- MMS Fall 2022 Virtual SWT, hosted by LASP, <https://lasp.colorado.edu/galaxy/x/3waGBw>
- MMS ISSI Workshop (June 27-July 1, 2022)
- 8th MMS Community Workshop, hosted by Embry-Riddle University, Spring 2022 <https://commons.erau.edu/mms-conference/2022/>
- MMS Fall 2021 Community Workshop, Waterville Valley NH <https://swri-eos.unh.edu/mmsatw/> - <https://lasp.colorado.edu/galaxy/x/qJH4BQ>
- MMS Spring 2021 Virtual SWT <https://lasp.colorado.edu/galaxy/x/CoF7BQ>
- MMS Fall 2020 Virtual SWT <https://lasp.colorado.edu/galaxy/x/55uxB>
- MMS Spring 2020 Virtual SWT <https://lasp.colorado.edu/galaxy/x/KUm9Aw>
- [Previous SWT meeting presentations](#)

Want to add a meeting to this list? Please feel free to log in and hit that "edit" button. (both at the upper right corner of the screen).

Aug-2024	Date	Team	Group	Lead
1 st Tuesday	8/6	17	SwRI – Deputy PI	Kevin Genestreti
2 nd Tuesday	8/13	18	CNRS LPP - France	Oliver LeContel
3 rd Tuesday	8/20	19	IRAP, Bordeaux, U Murcia - France	Beniit Laraud /Sergio Toledo - Redondo
4 th Tuesday	8/27	20	U Michigan – TMDA & FIELDS	Tamas Gombosi/Jim Slavin

Sep-2024	Date	Team	Group	Lead
1 st Tuesday	9/3	21	Imperial College /U Southampton/ Northumbria U. - UK	Julia Stawarz /Imogen Gingell /Jonathan Eastwood
2 nd Tuesday	9/10	22	U Delaware - TMDA	Bill Mattheaus
3 rd Tuesday	9/17	23	Early Career PI Group	Rachel Rice CANCELLED (MMS Worksop)
4 th Tuesday	9/24	24	KTH - Sweden	Per-Arne Lindqvist /Andris Vaivads /Tomas Karlsson

Oct-2024	Date	Team	Group	Lead
1 st Tuesday	10/1	1	Project – PI/PS /MOC /SOC	Jim Burch
2 nd Tuesday	10/8	2	UNH - FIELDS	Matt Argall /Roy Torbert
3 rd Tuesday	10/15	3	GSFC - FPI	Dan Gershman
4 th Tuesday	10/22	4	Ames - TMDA	Michael Hesse
5 th Tuesday	10/29		Break	

NOTE for those that visit NASA

Goddard – A new Main Gate entrance and badging office on ICESat Road is operational (see [map](#)). The new badging office in Building 17 is intended to provide an improved experience for visitors and employees.

When hosting, please feel free to think broadly about your approach. For example,

- It is perfectly fine to have fewer, longer presentations rather than the standard three short presentations.
- Consider simply leading a discussion of an open question, a new event, or an analysis /simulation tutorial.
- Invite people to present that are "further afield" than your own team. (e.g., a newly published paper of interest.)
- If your week overlaps with a major conference or MMS SWT meeting, please anticipate that telecon will be cancelled.

As always, every host prioritizes anyone from across our community that wishes to present their new material for feedback from the team, especially to check the use or interpretations of the datasets.

If you are a "late breaking" co-author addition to an about-to-be submitted paper, it is a good practice to ask the author of that paper to present at this forum.

Administrative

- **MMS Publications**
[LASP site](#)
<https://lasp.colorado.edu/galaxy/display/mms/MMS+Publications>
[Web of Science](#)
<https://www.webofscience.com/wos/author/record/1530218>
[Google Scholar](#)
<https://scholar.google.com/citations?user=OWZfs-4AAAAJ>
- Public Outreach (Proposed Highlights, Press Releases)
- [NASA Conference Tracking](#)
- [SWT Mailing List](#)
- [Photo Gallery](#)
- Mission Success - Program Level Requirements
- [2020 Senior Review Proposal](#)
- [2023 Senior Review Proposal](#)
- [2010 Project Data Management Plan](#)

Data and Standards

- [Data Rights and Rules for Use](#)
- [MMS Team File Share Point](#)
- [Science Data Center](#)
- [Data Product Levels](#)
- [Data Products List](#)
- [Coordinate Systems Spec](#)
- [Ephemeris/Attitude info](#)
- [Units of Measure](#)
- [File Name](#) and [CDF](#) Standards
- [Plot Standards](#) <- [COLORS](#)
- [CDF and SPASE info](#)
- Data Processing: [MEC transition](#), [Data Validation](#)
- [DOI](#)
- [Acknowledging MMS-funded publications](#)

Operations and Software

- [Payload Ops Center](#)
- [SITL Homepage](#)
- [MMS Payload Status](#)
- [SPDF Orbit Plots \(now 3 years\)](#)
- [FPI Team Area](#)
- [SPEDAS for MMS](#)
- [TDAS Tutorial](#)

