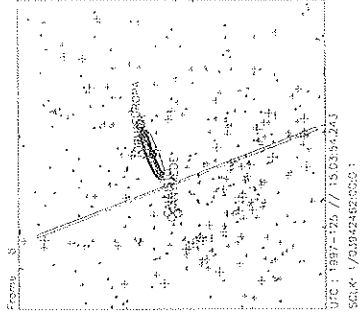
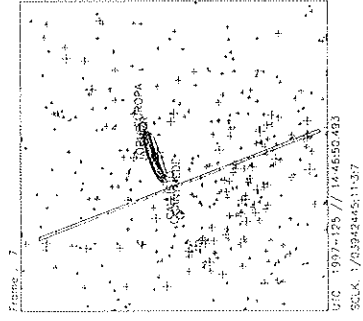
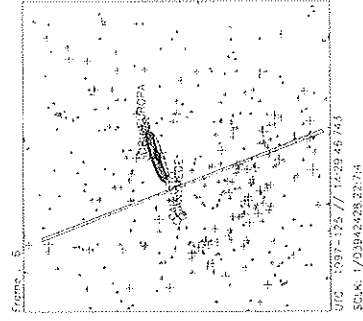
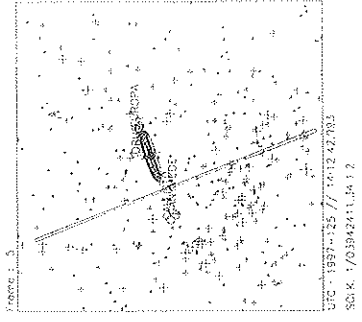
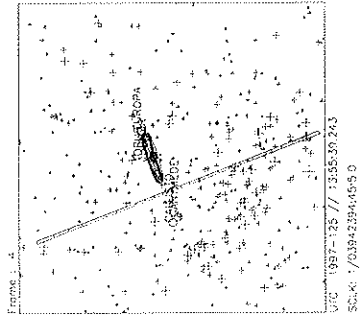
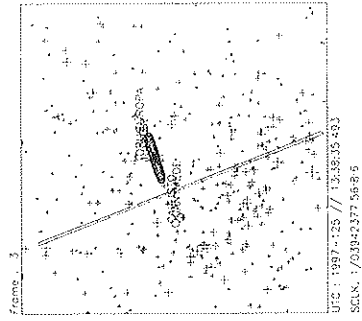
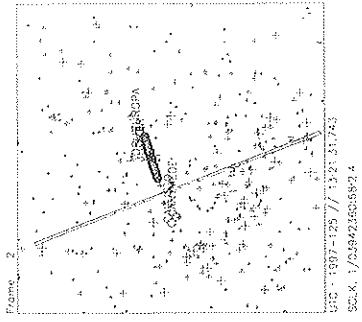
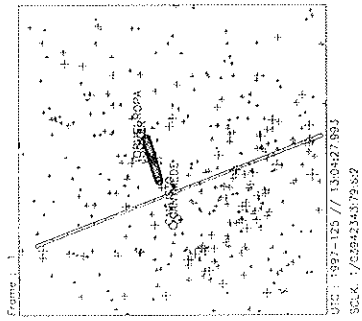
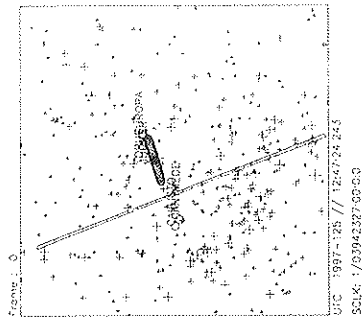


Activity ID: Orbit G8		OAPEL TV8EUVON		SeqNo 01-	
Title		EUV POWER ON, G8 INBOUND		Instrument EUV	
Requestor		UVS-MWG/S.STEPHENS		Team UVS	
				Working Group MWG	
Time System	CDS	Load ID	G8A	Calendar Date	05/05/97
				Week	18
Start	JEE-CDS 00004217:00:0		97-125/12:38:22.067		JEE-002/23:03:51.333
End	JEE-CDS 00004073:00:0		97-125/15:03:58.067		JEE-002/20:38:15.333
Duration	00000144:00:0		000/02:25:36.000		000/02:25:36.000
Top Label		G8TV8EUVON01-			
Bottom Label		(EUV Power On)			
Plot Key	EUV	Type	SCI		
CDS Bytes	1121	Report Options	BOTH	Scan Platform	No
CDS Source	PA	Spin State	DUAL	DMS	No
Observation Objective					
<div style="display: flex; align-items: flex-start;"> <div style="border: 1px solid black; width: 200px; height: 150px; margin-right: 20px;"></div> <div> <p>EUV POWER ON, G8 INBOUND (33.7 Rj):</p> <p>Load CDS memory and start the microprocessor, using Phase 2 EUVON library sequence</p> <p>Load torus Fixed Pattern Noise Table (FPNT), using Phase 2 EUVTOR library sequence</p> <p>Configure EUV for taking data, using an EUVCMD PA</p> <p>NOTE: First 120 RIMS of MANS11 are for <u>EUV-UVS cross-calibration</u> (10 scans per sector)</p> <p>Last 360 RIMS of MANS11 are for UVS/EUV torus observations (2 scans per sector)</p> </div> </div>					
on sky Bkg. at Europa ansa					
Design Detail					
PSID	RIM:mf	CDS	PA		
384BC	0	0		COMMENT [UVS RIM 0]	
	0	900		[LOAD PHASE 2 EUVON LIBRARY SEQUENCE]	
	6	179		[LOAD PHASE 2 EUVTOR LIBRARY SEQUENCE]	
351BA	8	21		EUVCMD [TARGET BODY TORUS]	
	8			24EUV,N,C,3,3F,C,A,18 [STARTING STEP 63, 10 SCANS/SECTOR, 24 SECTORS]	
351BC	143	21		EUVCMD [TARGET BODY TORUS]	
	143			24EUV,N,C,3,5A,C,2,18 [STARTING STEP 90, 2 SCANS/SECTOR, 24 SECTORS]	

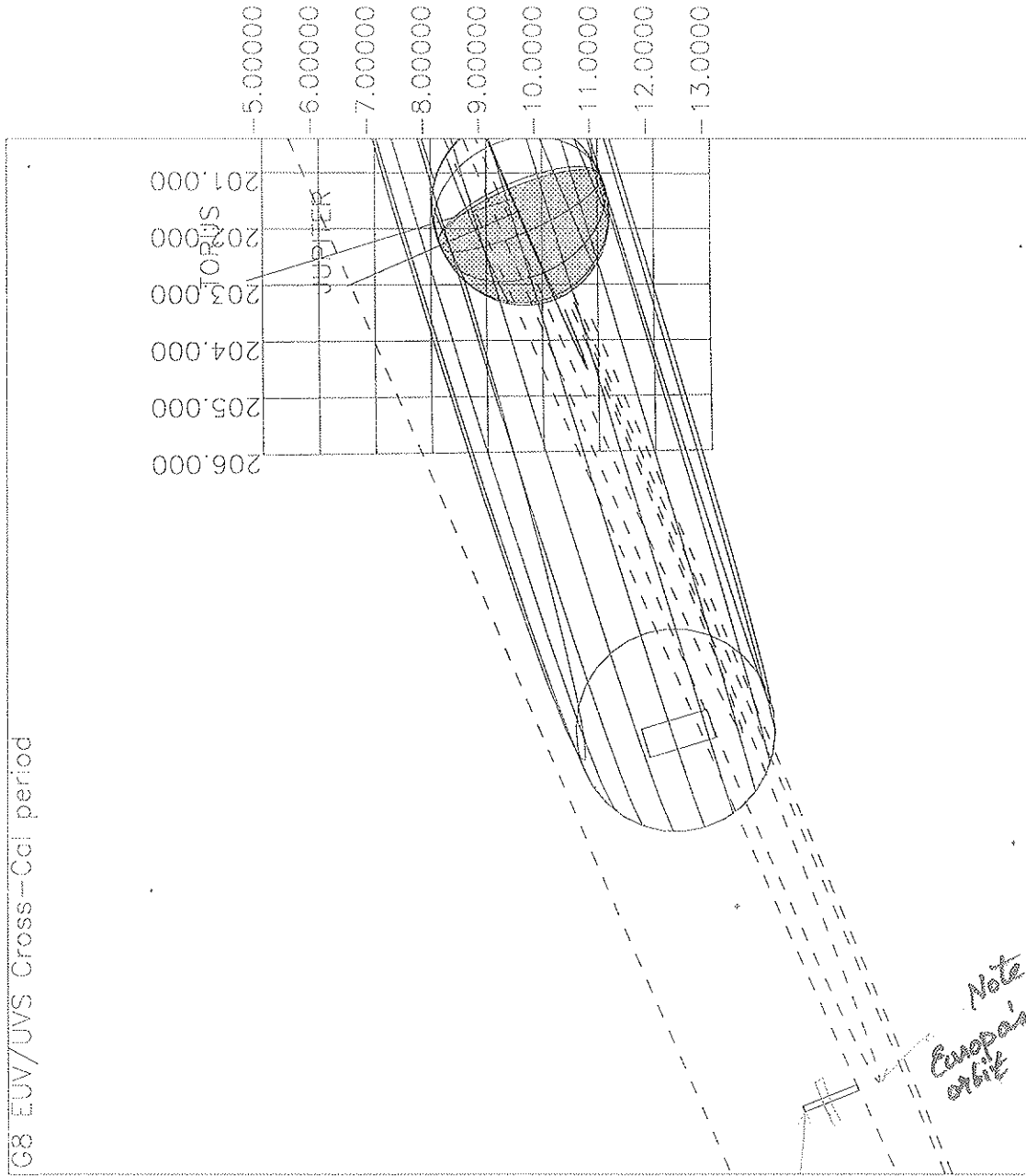


Start UTC TIME : 1997-125 // 12:47:24.243
 No End Time :
 Start SCLK : 1/03942327:00:00

Target Body : JUPITER
 Target Ra/Dec : 201.57 / -9.57 Deg
 S/C to Body Center : 2430511. Km (33.994291 Rj)
 Z-axis Pointing (Ra / Dec) : 132.00 / 17.00 Deg

Tue Nov 17 19:17:12 1998

G8 EUV/UVS Cross-Cal period



Target Body : JUPITER
 Target Ra/Dec : 201.68 / -9.62 Deg
 S/C to Body Center : 2424535. Km (33.913370 Rj)
 Z-axis Pointing (Ra / Dec) : 132.08 / 16.90 Deg

Start UTC_TIME : 1997-125 // 15:03:00.000
 End UTC_TIME : 1997-125 // 15:03:00.000
 Start SCLK : 1/03942342:38:6.3
 Delta Time between FOV : 300.0000
 FOVs : F Channel(0.1x0.4), N/G Channel(0.1x1.0)

So, this must be one of the "sky blob" type crosscals when both Insts are looking at the same "sky"

Cone = 89.9°

Activity ID: Orbit G8		OAPEL TVEUVOFF		SeqNo 01-	
Title		EUV POWER OFF, G8 INBOUND		Instrument EUV	
Requestor		UVS-MWG/S.STEPIENS		Team UVS	
				Working Group MWG	
Time System	CDS	Load ID	G8A	Calendar Date	05/06/97
				Week	19
Start	JEE-CDS 00002788:00:0		97-126/12:43:14.734		JEE-001/22:58:58.666
End	JEE-CDS 00002777:00:0		97-126/12:54:22.067		JEE-001/22:47:51.333
Duration	00000011:00:0		000/00:11:07.333		000/00:11:07.333
Top Label		G8TVEUVOFF01-			
Bottom Label		(EUV Power Off)			
Plot Key	EUV	Type	SCI		
CDS Bytes	208	Report Options	BOTH	Scan Platform	No
CDS Source	PA	Spin State	DUAL	DMS	No
Observation Objective					
<div style="display: flex; align-items: flex-start;"> <div style="border: 1px solid black; width: 150px; height: 100px; margin-right: 10px;"></div> <div> <p>EUV POWER OFF, G8 INBOUND (25.9 Rj): Turn EUV off after end of simultaneous UVS/EUV observations in G8A</p> </div> </div>					
Design Detail					
PSID	RIM:mf	CDS	PA		
384BM	0	0	COMMENT [UVS RIM 0]		
349ME	0:69	28	UVFLUSH [GUVRT, PACKET, EUV]		
	3	180	[LOAD PHASE 2 EUVOFF LIBRARY SEQUENCE]		